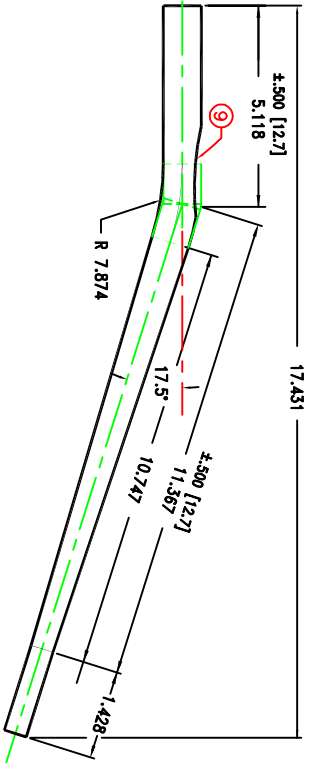
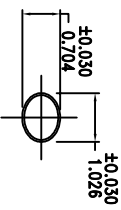
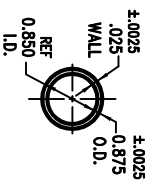
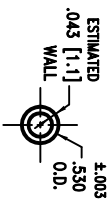
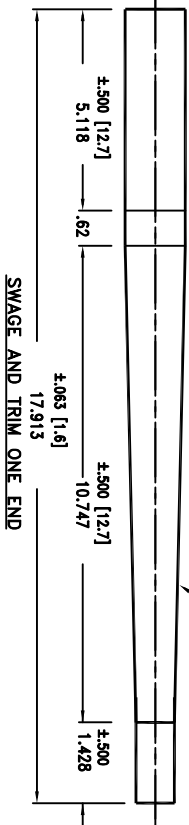
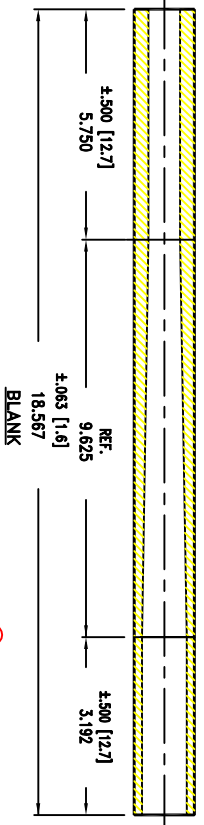
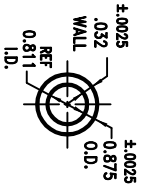


CHAIN STAY RH TK270920



NOTES

- ① DENT FOR CHAIN CLEARANCE
- ② SHIPPING PACKAGE: CONTAINER CODE #PIECES PER CONTAINER
PBRSC28 | 100
- ③ SURFACE COATING: TREK ANTI RUST
- ④ SWAGE DIE: SDDTBD DRAWING NUMBER TBD
- ⑤ SURFACE FINISH: POLISH
- ⑥ HARDNESS: Rb 90-105
- ⑦ MATERIAL: 4130
- ⑧ PART MADE TO TRUE TEMPER PROCEDURE AND TESTS STANDARDS.

BLANK DEFINITION

TK270920BLANK 4130S079

REV	INITIAL PRODUCTION RELEASE	BY	DATE
A	CHANGE	AR	8/28/06

TRUE TEMPER

8275 TOURNAMENT DRIVE
SUITE 200
MEMPHIS, TN 38125 (901) 746-2000

DRAWN BY: A. RANDOLPH	DESCRIPTION: STEEL FISHER CHAIN STAY (RH)
CORPORATE: B. HULL	PART FAMILY: TREK DRAWING 270920
MFG. ENGINEERING: S. PUGSLEY	WORK ORDER NUMBER: TK270920
PLANT MANAGEMENT: T. GRIFFITH	DRAWING NUMBER: AST-01-06
QUALITY ASSURANCE: K. EVANS	REVISION: A
DATE: 6/9/06	TOLERANCES (EXCEPT AS NOTED)
SCALE: NONE	DECIMAL X +/- 0.125
ECN NUMBER:	XX +/- 0.063
SIZE/SHEET: A / 1	.XXX +/- 0.002
	STEP LOCATION (FROM TIP) +/- 0.063 (NON ACCUMULATIVE)

THIS DOCUMENT IS THE PROPERTY OF TRUE TEMPER SPORTS. THE CONTENTS OF THIS DOCUMENT ARE UNCLASSIFIED. ANY REPRODUCTION OF THIS DOCUMENT WITHOUT THE WRITTEN CONSENT OF TRUE TEMPER SPORTS IS PROHIBITED. IF THIS DOCUMENT IS DISCLOSED TO ANY UNAUTHORIZED PERSON OR COPIED, OR PUBLISHED WITHOUT TRUE TEMPER SPORTS PRIOR WRITTEN CONSENT.