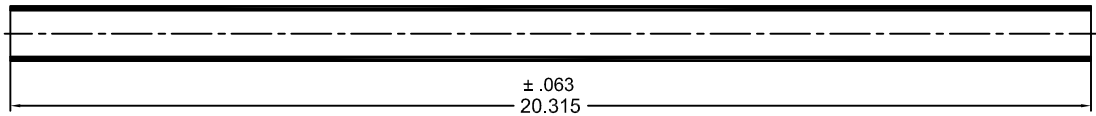
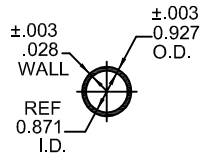
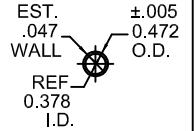
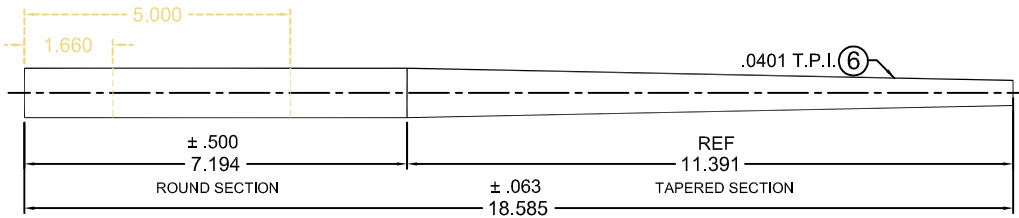
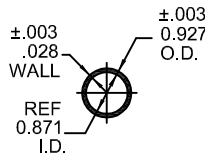


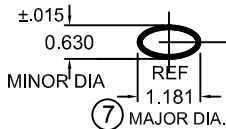
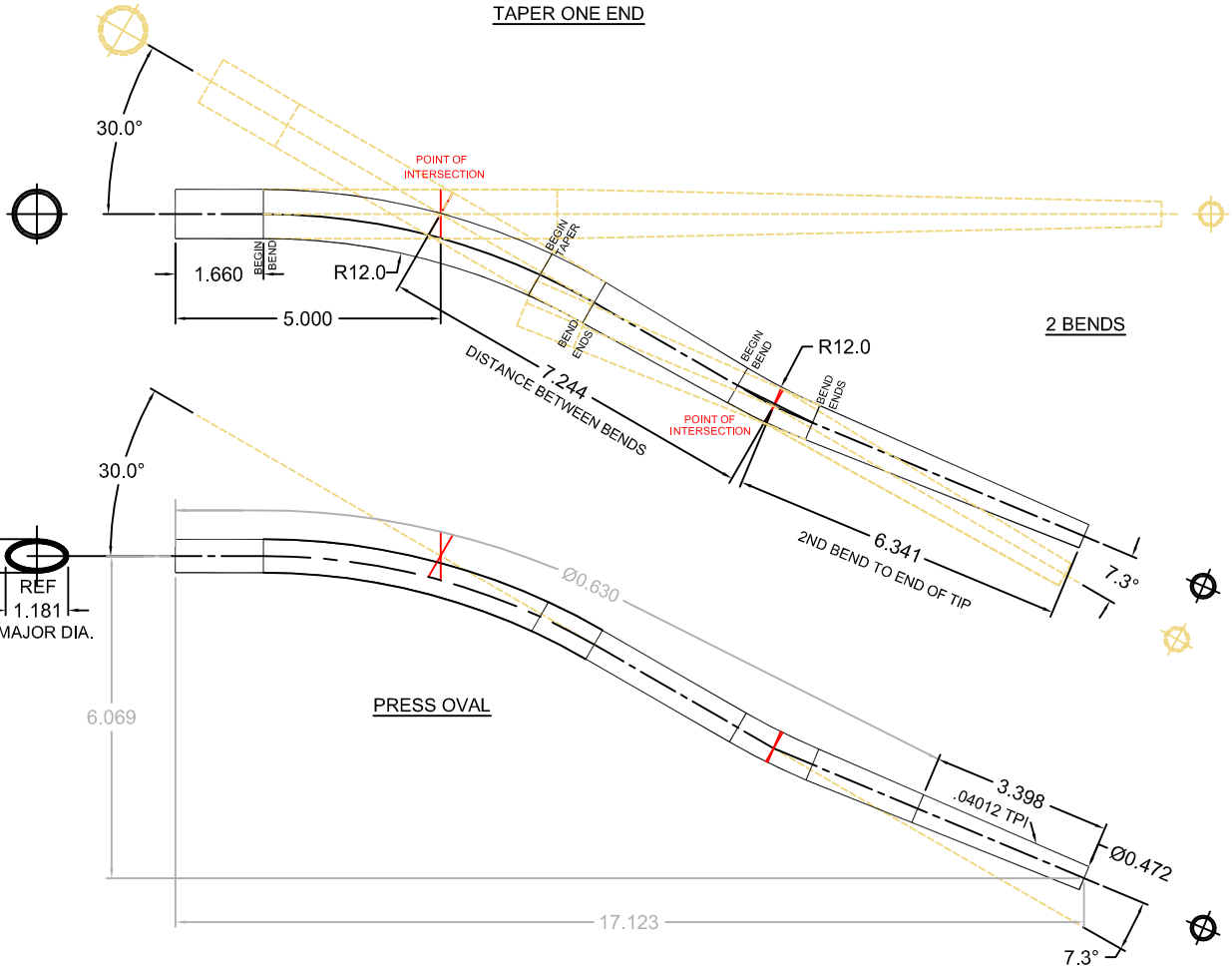
CHAIN STAY



STRAIGHT PULL BLANK
BLANK IS 3/4" LONGER THAN SWAGED PART



TAPER ONE END



PRESS OVAL

NOTES

- 8 SHIPPING PACKAGE: PBST30
- ⑦ PRESS DIE TBD-HOLD FOR JAMES- NEW DIE REQUIRED
- ⑥ SWAGE DIE: SDD230 SAME SWAGE DIE AS HSBENDCS1
- 5 SURFACE COATING: OIL
- 4 SURFACE FINISH: POLISH
- 3 HARDNESS: Rc 30-35
- 2 MATERIAL: 4130 SEAMLESS
- 1 PART MADE TO TRUE TEMPER PROCEDURE AND TESTS STANDARDS.

BLANK DEFINITION

REEBCS-FATBLANK 4130 SEAMLESS

PRELIMINARY

CORPORATE ENGINEER	DATE
CUSTOMER	DATE

A	INITIAL PRODUCTION RELEASE	AR	PENDING
REV	CHANGE	BY	DATE



8275 TOURNAMENT DRIVE
SUITE 200
MEMPHIS, TN 38125 (901) 746-2000

DRAWN BY: A. RANDOLPH CORPORATE:	DESCRIPTION: REEB SWAGED, BENT CHAIN STAY
D. ELOY MFG. ENGINEERING:	PART FAMILY: REEBCS-FAT
PLANT MANAGEMENT:	RFD: PS-14022
QUALITY ASSURANCE:	DRAWING NUMBER: AST-101-14
DATE: 10/16/14	TOLERANCES (EXCEPT AS NOTED)
SCALE: NONE	DECIMAL X +/- 0.125
ECR NUMBER:	.XX +/- 0.063
SIZE/SHEET: A/1	.XXX +/- 0.002
	STEP LOCATION (FROM TIP) +/- 0.063 (NON ACCUMULATIVE)
	REVISION A

THIS DOCUMENT IS THE PROPERTY OF TRUE TEMPER SPORTS. THE CONTENTS OF THIS DOCUMENT ARE CONFIDENTIAL AND CONSTITUTE TRADE SECRETS PROPRIETARY TO TRUE TEMPER SPORTS. NEITHER THIS DOCUMENT NOR ITS CONTENTS SHALL BE DISCLOSED TO ANY UNAUTHORIZED PERSON OR COPIED, OR PUBLISHED WITHOUT TRUE TEMPER SPORTS PRIOR WRITTEN CONSENT.